

Bitzer 4T.2 condensing unit

Specifications

Brand	Bitzer
Type	4T.2 condensing unit
Refrigerant	Freon
kW at 0°C/+40°C	33,1
kW at -5°C/+40°C	27,6
kW at -10°C/+40°C	22,8
kW at -20°C/+40°C	15,1
kW at -30°C/+40°C	9,4
kW at -40°C/+40°C	5,2
kW at -45°C/+40°C	3,7
Electromotor Specs	N/A (can be changed)
Unloaded Start	✓
Capacity Control	✓
Pressure safety switches	✓
Hp/Lp/Op	
Oil separator	✓
Liquid line filter drier	✓
Remarks	Our capacity table is based on Manufacturer spec. We would like to know which refrigerant is in your system
Condensing Unit	✓
Sizes	2150x760x1440 mm (LxWxH)
Stock	1

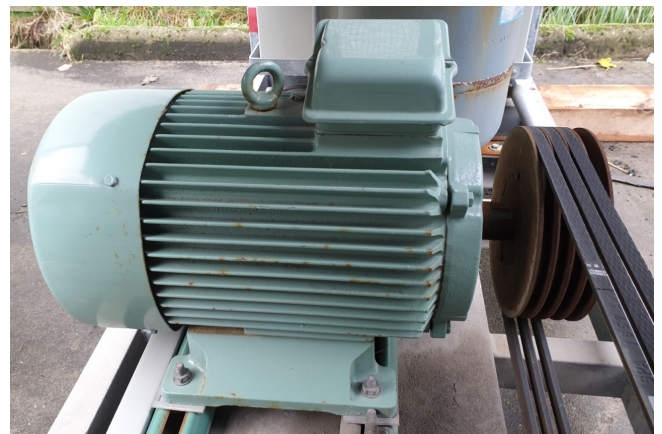
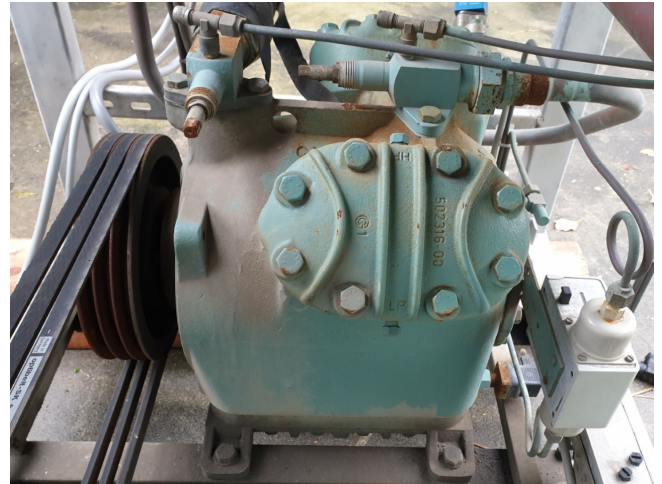


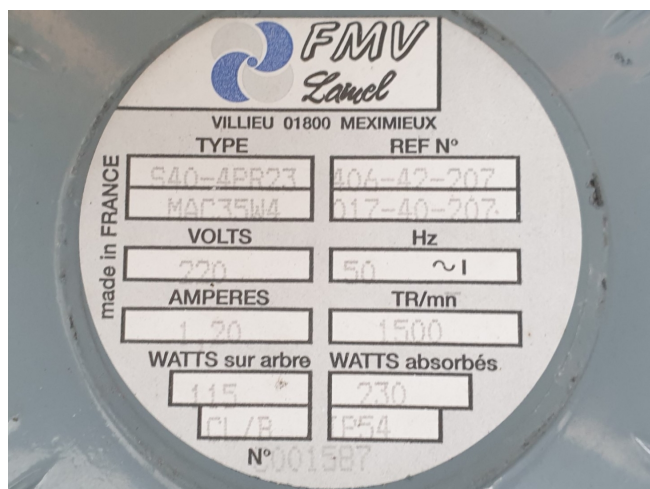
Description

Used Bitzer 4T.2 condensing unit

Used condensing unit with a Bitzer 4T.2 Open-Type Reciprocating compressor with a VEM KPER 160 M4 electromotor: 50 Hz - 11 kW - 1440 RPM, liquid receiver and a liquid line filter drier.

*Why choose for HOSBV? Were not only the largest used refrigeration specialist in Europe, but also, we deliver all equipment including an extensive test, warranty and industrial cleaning. Optional we can arrange shipment and export documents."





Result

		Cooling capacity		COP [-]		COP/EEER	
		Cooling capacity *		COP* [-]		COP/EEER *	
		Power input		m [kg/h]		Mass flow	
		Condenser Capacity		n [min]		Compr. speed	
tc	to	10°C	0°C	-10°C	-20°C	-30°C	-40°C
30°C	Q [W]	38121	26355	17572	11134	6539	--
	Q* [W]	38121	26355	17572	11134	6539	--
	P [kW]	8.23	7.61	6.55	5.35	4.29	--
	Qc [W]	46355	33961	24123	16453	10826	--
	COP [-]	4.63	3.46	2.68	2.08	1.53	--
	COP* [-]	4.63	3.46	2.68	2.08	1.53	--
	m [kg/h]	969	656	430	270	157.2	--
40°C	n [min]	1450	1450	1450	1450	1450	--
	Q [W]	33057	22780	15064	9353	5236	--
	Q* [W]	33057	22780	15064	9353	5236	--
	P [kW]	9.33	8.26	6.94	5.66	4.69	--
	Qc [W]	42387	31053	22008	15009	9921	--
	COP [-]	3.54	2.76	2.17	1.65	1.12	--
	COP* [-]	3.54	2.76	2.17	1.65	1.12	--
50°C	m [kg/h]	948	638	414	254	141.1	--
	n [min]	1450	1450	1450	1450	1450	--
	Q [W]	27768	19081	12471	7530	3918	--
	Q* [W]	27768	19081	12471	7530	3918	--
	P [kW]	10.40	9.00	7.53	6.27	5.49	--
	Qc [W]	38165	28084	20004	13799	9406	--
	COP [-]	2.67	2.12	1.66	1.20	0.71	--
	COP* [-]	2.67	2.12	1.66	1.20	0.71	--
	m [kg/h]	925	618	396	236	121.4	--
	n [min]	1450	1450	1450	1450	1450	--

-- No calculation possible (see message in single point selection)

*According to EN12900 (20°C suction gas temp., 0K liquid subcooling)